



Environmental Services Pty. Ltd.



CAPABILITY DOCUMENT



Aust Care Environmental Services
Integrity, Reliability, Safety



INTRODUCTION

Established in 1999, Aust Care Environmental Services has evolved from humble beginnings to be now recognized as an industry leader

in the safe and reliable delivery of on ground natural area management solutions throughout Southeast Queensland and northern NSW.

The company's range of sophisticated equipment and highly trained staff enable it to cost effectively perform a diverse range of natural area management functions that address the needs of its clients and their environmental compliance obligations

anywhere and at any time...and that is the Aust Care Difference...safe and reliable delivery of service in areas where the others cannot get to!

Our Natural Area Management functions include:

- Easement and Land Management
- Erosion and Sediment Control
- Natural Area Rehabilitation
- Track and Trail construction
- Weed Control

These skills are utilised in bushland areas, waterways, Project Offset sites, Pipe and Power-line Easements, Water Supply Catchments, Road and Rail Corridors, Industrial and Residential Estates, Mine Sites and large Rural Properties.

Our clients include:

- Public Utility Organisations,
- Local and State Governments
- Industrial and Residential Developers
- Mining Companies
- Rural Landholders
- Civil Construction Contractors

The Directors of Aust Care Environmental Services, Robert Brown, are supported by key positions of General Manager, Operations Manager, Natural Area Managers, Office Manager and Projects Co-Ordinator. Collaboratively they manage a large team of on ground operators and sub- contractors who perform a combination

of small, medium, and large-scale land management projects. From small erosion control works to large scale native plantings the team at Aust Care Environmental Services have it covered.





MANAGEMENT TEAM



Michael Williams

General Manager

michaelw@austcare.net.au

Michael has worked with Aust Care Environmental Services since its establishment in 1999. During this time, he has obtained extensive experience in a range of both managerial and operational roles including Environmental Operator, Team Leader, Business Development

Manager, Operations Manager, Natural Areas Manager, and his current role as General Manager. This experience coupled with his tertiary qualifications have provided him with an excellent theoretical and practical knowledge of all aspects of environmental management.



Adam Barter

Natural Areas Manager

adamb@austcare.net.au

Adam has fostered a passion for environmental works since the time he left his secondary schooling in the late 1990's. Adam has accrued over 20 years of experience in various horticultural fields of study and employment, first commencing in the region of the Northern Rivers of NSW, before migrating North to Southeast

Queensland. Adam brings his passionate drive for the environment to Aust Care Environmental Services in his Management Role after having spent his formative years within the company as a Team Leader in the field.



Aust Care Environmental Services

Integrity, Reliability, Safety



Luke Deslandes
Natural Areas Manager
luked@ austcare.net.au

Luke started with Aust Care in 2020 as an Environmental Operator and Team Leader, before moving into the management position he currently holds. Luke has background working with community and volunteer environmental groups across Australia and Southeast Asia and is deeply passionate about developing new best practices and refining the execution of

existing ones. Luke takes pride in team development and fostering a culture of inclusiveness where all team members can bring their best self to the services that Aust Care provides. Luke has a degree in Environmental Policy and Management and is constantly working to further develop his knowledge of ecological restoration in SEQ environments.





OUR SYSTEMS

Aust Care Environmental Services has developed and continues to maintain a certified **Triple Accredited Integrated** Management System that complies with the requirements contained within ISO9001 (Quality), ISO14001 (Environment) and OHS

AS/NZS 4801 (Health and Safety)
The company also subscribes to the Zero Harm program administered by Safe Work Australia; all of which ensures our activities occur with absolute minimal environmental impact and maximum quality and safety





PAST & CURRENT PROJECTS

Since 2000 Aust Care Environmental Services has successfully and safely delivered a myriad of natural area management functions for Local and State Governments, Public Utility Organisations, Private Developers, Mine sites and large Graziers.

The works the company has delivered for the sectors has included:

- Stabilising large steep and exposed batters
- Rehabilitating waterways
- Undertaking mass native tube stock plantings
- Constructing rock lined swale drains, small sediment basins, diversion berms and assortment of erosion and sediment control devices
- Project managing direct seeding and hydro-mulching operations
- Declared Pest Plant and environmental weed control and general ecological restoration works
- Removal and disposal of dumped car bodies, tyres and assortment of wastes
- Rectification of fencing

- Construction of earth and rock lined tracks and trails
- Large tree removal and relocation

Specifically these solutions have been, and/or continue to be, delivered to;

- Redlands City council
- Logan City council
- Moreton Bay Regional Council
- Brisbane City Council
- SEQ Water
- Sibelco Australia – North Stradbroke Island
- Veolia Water - The 214km Western Corridor Recycled Water Scheme (WCRWS) easement
- Scenic Rim Regional Council





TRACK & TRAIL CONSTRUCTION

Aust Care construct bike and walking tracks to conform with National Park standard codes (track construction/reconstruction works of Australian standard AS 2156-2001). Depending on their predicted usage these tracks and trails can be made from natural earth material or more resilient decomposed granite. We also specialise in the construction of vehicle access tracks, watercourse crossings, boardwalks, fire breaks and fire trails. All of which can be constructed in accordance with Local and State Government specifications. Our specialised all terrain equipment allows these assets to be built quickly with a minimum of disturbance to neighboring sites.





WEED CONTROL

Aust Care Environmental Services can provide a coordinated and integrated approach to pest plant management on a site. The team can perform pest plant mapping, planning and the implementation of pest plant eradication programs. With 8 dedicated spray vehicles including 6 quickspray units we can effectively and efficiently target pest plants in any site.

Our pest plant control methods can vary across all industry best practice chemical and mechanical techniques; these methods are determined by the target species, time of year, chemical registrations, site constraints and access. Our company also owns 2 small aluminum flat bottom watercrafts that enable efficient and safe removal of aquatic weeds within wetlands and river systems.



All pest plant control operators are fully licensed in the use of chemicals and machinery as required by state and federal legislation and are routinely tested and trained in pest and native plant identification.





EROSION CONTROL

Aust Care Environmental Services has spent over 15 years controlling erosion on work sites and preventing sediment deposition and accumulation within natural areas. This experience, coupled with both a technical understanding of the International Erosion and Control Association (IECA) guidelines and effective health and safety systems, means we can create a range of resilient and effective erosion and sediment control devices for any site.

These devices can range from open or rock lined swale drains, seeded, hydro-mulched or jute mesh batters, whoa-boys, culverts, sediment control fences, level spreaders, coir logs, ripple pads, rock filter dams, spillways and sediment basins





EASEMENT MANAGEMENT

Aust Care Environmental Services has the expertise and resources to perform complete Easement and Land Management services for your asset or project. This includes management of sensitive natural areas , open space areas and facilities.

The services we deliver to ensure successful completion of this whole of asset management approach include:

- Routine and regular communication and works planning with easement managers and, if required, community members
- Mapping, planning and eradicating pest plants
- Sensitive ecological restoration works within natural areas
- Assisted native planting and maintenance in key locations
- Management and delivery of cost-effective seeding and hydro-mulching works
- General grass control within open spaces areas
- Detailed erosion and sediment control works in watercourses, steep slopes or drainage outlets
- Subsidence rectification programs
- Fencing construction and maintenance
- Creation of fire breaks and general clearing that enables safe access to all parts of the asset
- Routine easement and land management activity and progress reporting





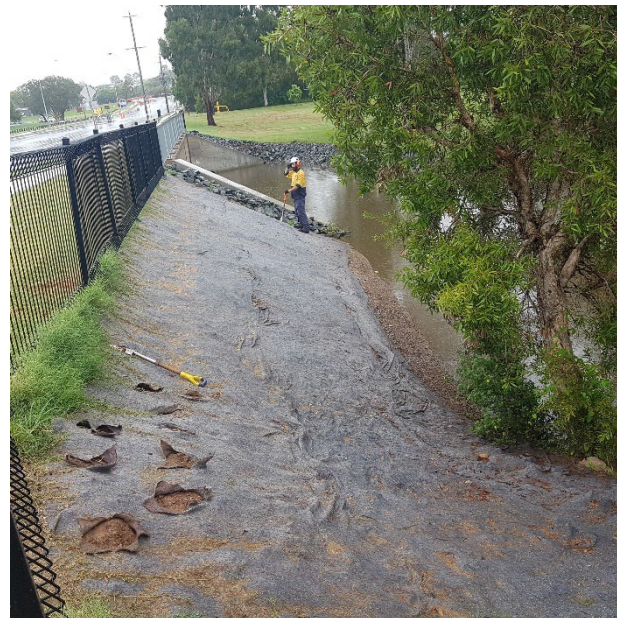
NATURAL AREA REHABILITATION

The Aust Care Environmental Services natural area rehabilitation team are experts in planning, implementing, and maintaining re-vegetation and offset plantings. With access to reliable plant suppliers, material providers and a keen eye for plant nutrition and disease symptoms, the team can ensure only the hardiest and healthiest plants are delivered and used on our client's site.

Aust Care Environmental Services also manage seed collections, direct seeding and hydro-mulching operations that provide our clients the opportunity to re-vegetate large scale sites at a much lower square meter cost that is often associated with tube stock plantings.

Our plant and equipment include a variety of water trucks and hole diggers which allows us to perform small or large plantings in

a variety of situations including wetlands, steep batters, and large grazing properties. All planters are routinely trained in the use of fall and arrest restraining systems that enables steep embankment plantings to occur safely and efficiently.





EQUIPMENT

Our specialised fleet of equipment allows us to access steep and difficult areas, work in sites during inclement weather and deliver our services in a cost effective manner for our clients. All equipment is supplied with an experienced and properly licensed operator





CONTACT DETAILS

Brisbane Head Office

234 Newnham Road Upper Mt
Gravatt Queensland 4122

T - 1300 138 096

F – (07) 3420 3093

E – admin@austcare.net.au

W – www.austcare.net.au



Aust Care Environmental Services
Integrity, Reliability, Safety